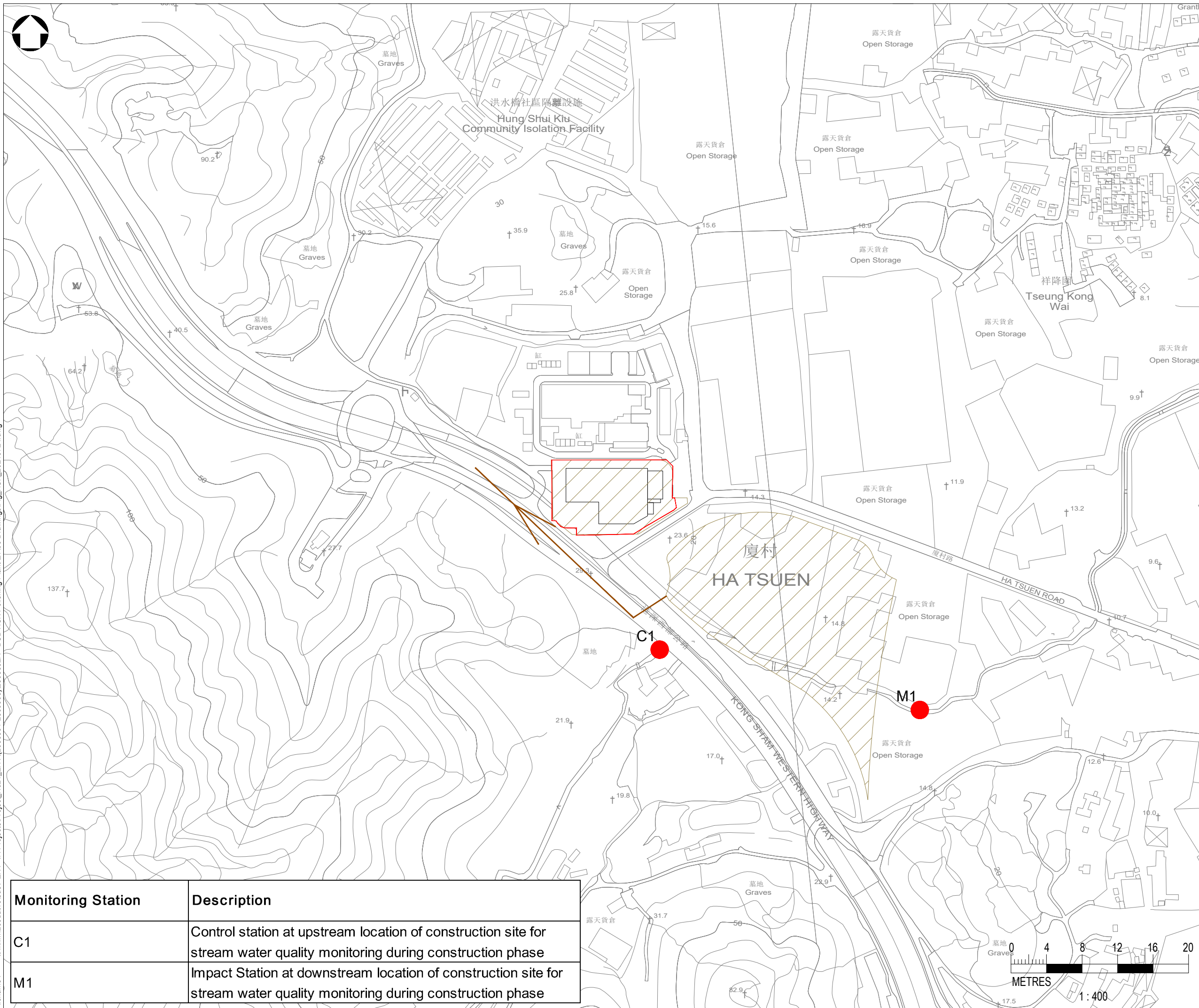


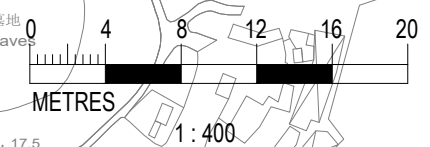


- LEGEND:**
- SITE BOUNDARY
 - PROPOSED HUNG SHUI KIU (HSK) EFFLUENT POLISHING PLANT
 - WATER QUALITY MONITORING STATIONS UNDER CONSTRUCTION PHASE
 - RISING MAIN FOR EFFLUENT DISCHARGE



Monitoring Station	Description
C1	Control station at upstream location of construction site for stream water quality monitoring during construction phase
M1	Impact Station at downstream location of construction site for stream water quality monitoring during construction phase

Rev	Description	By	Date
Project title CONTRACT NO. HATS 07/2023 ENVIRONMENTAL TEAM FOR HUNG SHUI KIU EFFLUENT POLISHING PLANT PHASE 1			
Drawing title LOCATIONS OF WATER QUALITY MONITORING STATIONS FOR CONSTRUCTION PHASE			
Drawing no.	FIGURE 3.2	Rev.	0
Drawn	Date	Checked	Approved
YT	JUL2024	VL	AL
Scale	1:400@A3	Status	-



Date: 2024/08/30
Filename: \\hkwn20\dat16\sde\ENV\7. Projects\Project_H321_ENV\2535851-2535900\2535852A - DSD HSK Polishing Plant ET106 Drawings\Fig_HSK_20240724.dwg