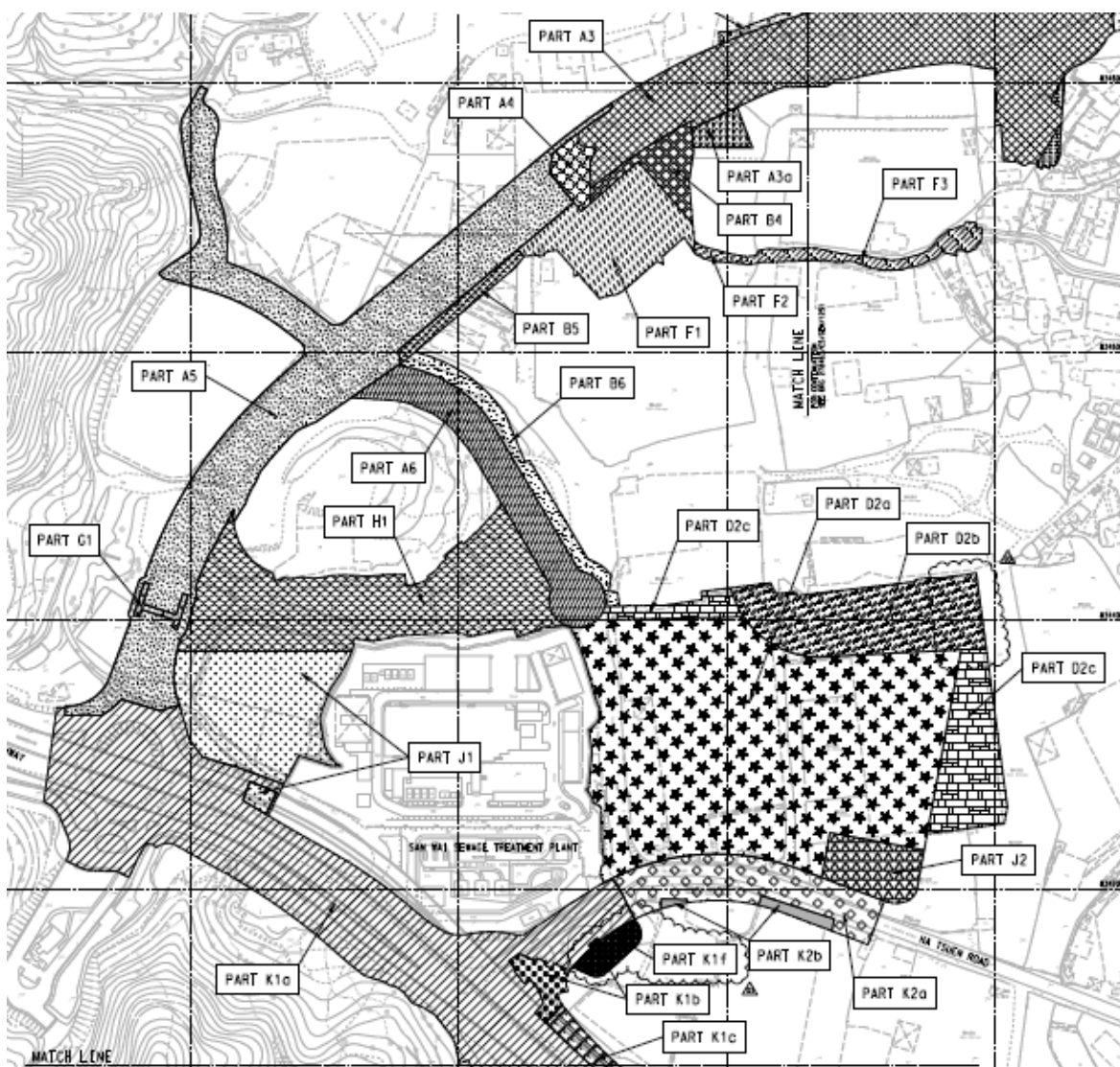


## Appendix L Details of the suspension of air quality impact monitoring at AM3

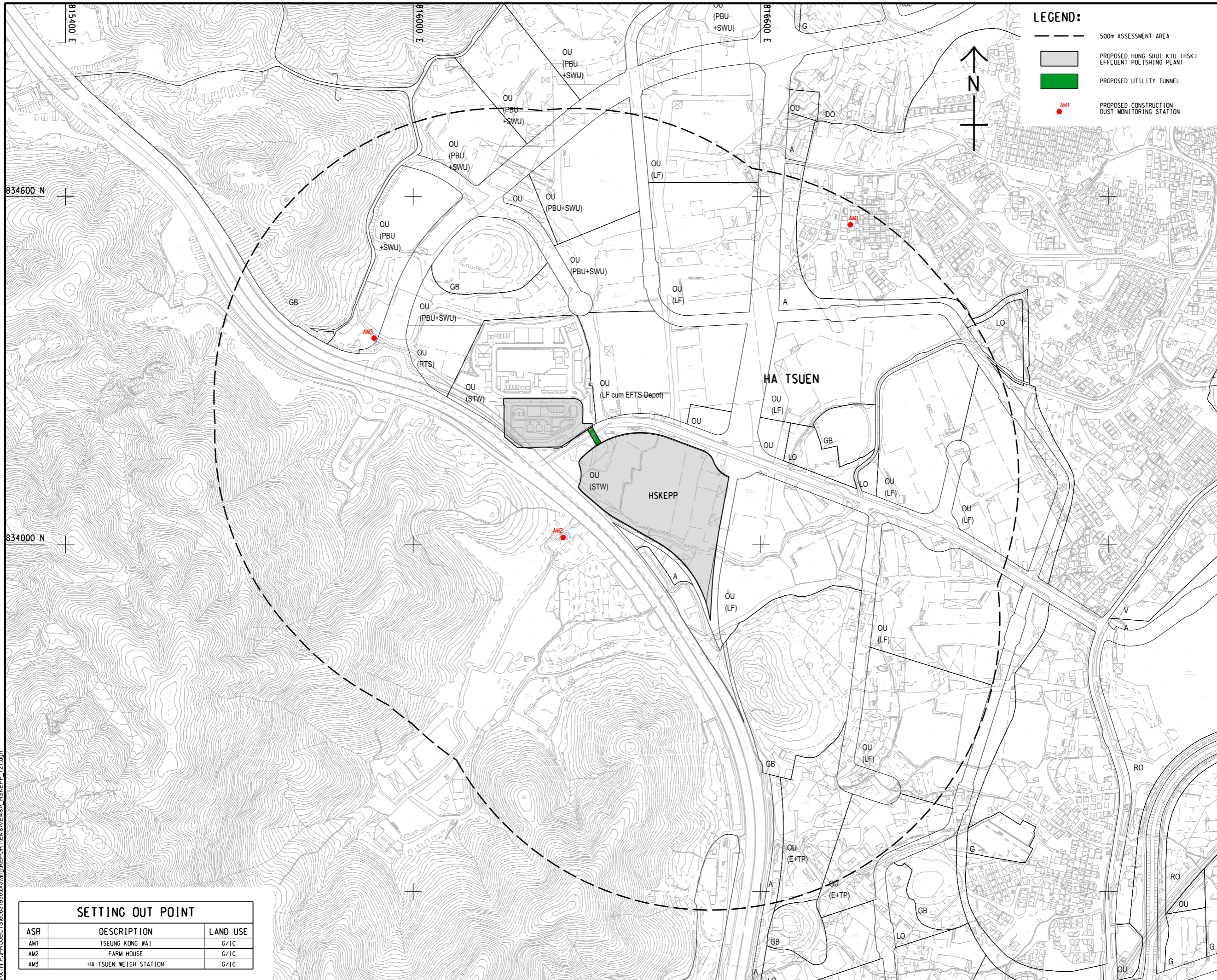
According to EM&A manual, the location of AM3 is representing Planned Port Back-up (PBU) (i.e. Figure 2.1 of the EM&A Manual), Storage and Workshop (SWU) but this area with the proposed land use of PBU and SWU is currently blocked for construction works under a separated CEDD's development contract as reported by ET's monitoring team on 1 Nov 2024, as presented in Photo 1.

Based on the CEDD works contract plan provided by DSD (i.e. refer to the below plan), most of the land parcels, including the area where AM3 is located, areas adjacent to the existing San Wai Sewage Treatment Plant and HSK Effluent Polishing Plant Phase 1, will become active construction areas in near future, and hence, these land parcels are not appropriate to be chosen as an alternative air quality monitoring stations based on the criteria listed in the EM&A Manual Section 2.2.4.3.



The abovementioned on-site observation and information were explained to DSD, IEC and EPD through emails and all parties had no comment on the suspension of air quality impact monitoring at AM3. The air quality impact monitoring at AM3 should be resumed after the completion of construction of the planned Port Back-up, Storage and Workshop at AM3. The email communications are attached in this appendix.

ISO A1 594mm x 841mm  
 Approved:  
 Checked:  
 Designer:  
 Project Management Initials:



**LEGEND:**

- 500m ASSESSMENT AREA
- PROPOSED HUNG SHUI KIU (HSK) EFFLUENT POLISHING PLANT
- PROPOSED UTILITY TUNNEL
- AM1 PROPOSED CONSTRUCTION DUST MONITORING STATION



**PROJECT**  
 HUNG SHUI KIU  
 EFFLUENT POLISHING  
 PLANT AND  
 YUEN LONG SOUTH  
 EFFLUENT POLISHING  
 PLANT - INVESTIGATION

**CLIENT**  
 渠務署  
 Drainage Services Department

**CONSULTANT**  
 AECOM Asia Company Ltd.  
 www.aecom.com

**SUB-CONSULTANTS**

**ISSUE/REVISION**

NO.	DATE	DESCRIPTION	CHK.

**STATUS**

**SCALE**      **DIMENSION UNIT**  
 A1 1 : 3000      METRES

**KEY PLAN**

**PROJECT NO.**      **CONTRACT NO.**  
 60631936      CE 6/2019 (DS)

**SHEET TITLE**  
 LOCATION OF CONSTRUCTION  
 DUST MONITORING STATIONS

**SHEET NUMBER**  
 60631936/EM&A/HSKEPP/FIGURE 2.1

**SETTING OUT POINT**

ASR	DESCRIPTION	LAND USE
AM1	TSEUNG KONG WAI	G/1C
AM2	FARM HOUSE	G/1C
AM3	HA TSUEN WEIGH STATION	G/1C

Plot File by: ZHUJCC 2022/11/22  
 PATH: P:\PROJECTS\60631936\Drawing\REPORT\EM&A\_HSKEPP\_721.dgn

This drawing has been prepared for the use of AECOM's client. It may not be used, modified, reproduced or relied upon by third parties, except as agreed by AECOM or as required by law. AECOM accepts no responsibility, and disclaims any liability, whatsoever, for any part, that less or relies on this drawing without AECOM's express written consent. All measurements must be obtained from the stated dimensions.

Photo 1



AM3



ROAD CLOSED  
道路封閉

To Fung Kong Tsuen R  
往鳳降村路 →

## Lam, Squall Ka-Wai

---

**From:** zhongminghe@epd.gov.hk  
**Sent:** Wednesday, November 6, 2024 4:29 PM  
**To:** Lam, Squall Ka-Wai  
**Cc:** kh.chan@aecom-tms.com; 'WT.Law'; 'Zhang, Yanning'; 'Chan, William'; 'Ao, Vanessa'; Li, Vanessa Tsz-Shun; Lo, Arthur Hong-Nam; tom.chan@aecom-tms.com; Johnathan Wong; Yu, Derek Siu-Hong; kylau02@dtd.gov.hk; mandy.to; htmak@epd.gov.hk  
**Subject:** Re: Hung Sui Kiu Effluent Polishing Plant Phase 1 - Suspension of Monitoring at AM3

**Follow Up Flag:** Follow up  
**Flag Status:** Flagged

Dear Squall,

Please be advised that we have no comment on the suspension of air quality monitoring at AM3 station- Planned Port Back-up, Storage and Workshop as the site for this planned use is under construction and inaccessible. Please properly document this proposed suspension in monthly EM&A report with support of figures and photos.

Moreover, the air quality impact monitoring at AM3 station should be resumed after the completion of construction of the planned Port Back-up, Storage and Workshop use. Please closely liaise with CEDD on the construction programme and resume the air quality impact monitoring at AM3 station as appropriate. Thanks.

Regards,  
Ming HE  
E(TN)32/EPD  
2835 2390

---

**From:** "Lam, Squall Ka-Wai" <Squall.Lam@wsp.com>  
**To:** "zhongminghe@epd.gov.hk" <zhongminghe@epd.gov.hk>  
**Cc:** "kh.chan@aecom-tms.com" <kh.chan@aecom-tms.com>, "WT.Law" <wt.law@aecom-tms.com>, "Zhang, Yanning" <Yanning.Zhang@aecom.com>, "Chan, William" <William.Chan1@aecom.com>, "Ao, Vanessa" <Vanessa.Ao@aecom.com>, "Li, Vanessa Tsz-Shun" <Vanessa.Li@wsp.com>, "Lo, Arthur Hong-Nam" <Arthur.Lo@wsp.com>, "tom.chan@aecom-tms.com" <tom.chan@aecom-tms.com>, Johnathan Wong <johnathan.wong@erm.com>, "Yu, Derek Siu-Hong" <Derek.Yu@wsp.com>, "kylau02@dtd.gov.hk" <kylau02@dtd.gov.hk>, mandy.to <mandy.to@erm.com>  
**Date:** 05/11/2024 11:57  
**Subject:** Hung Sui Kiu Effluent Polishing Plant Phase 1 - Suspension of Monitoring at AM3

---

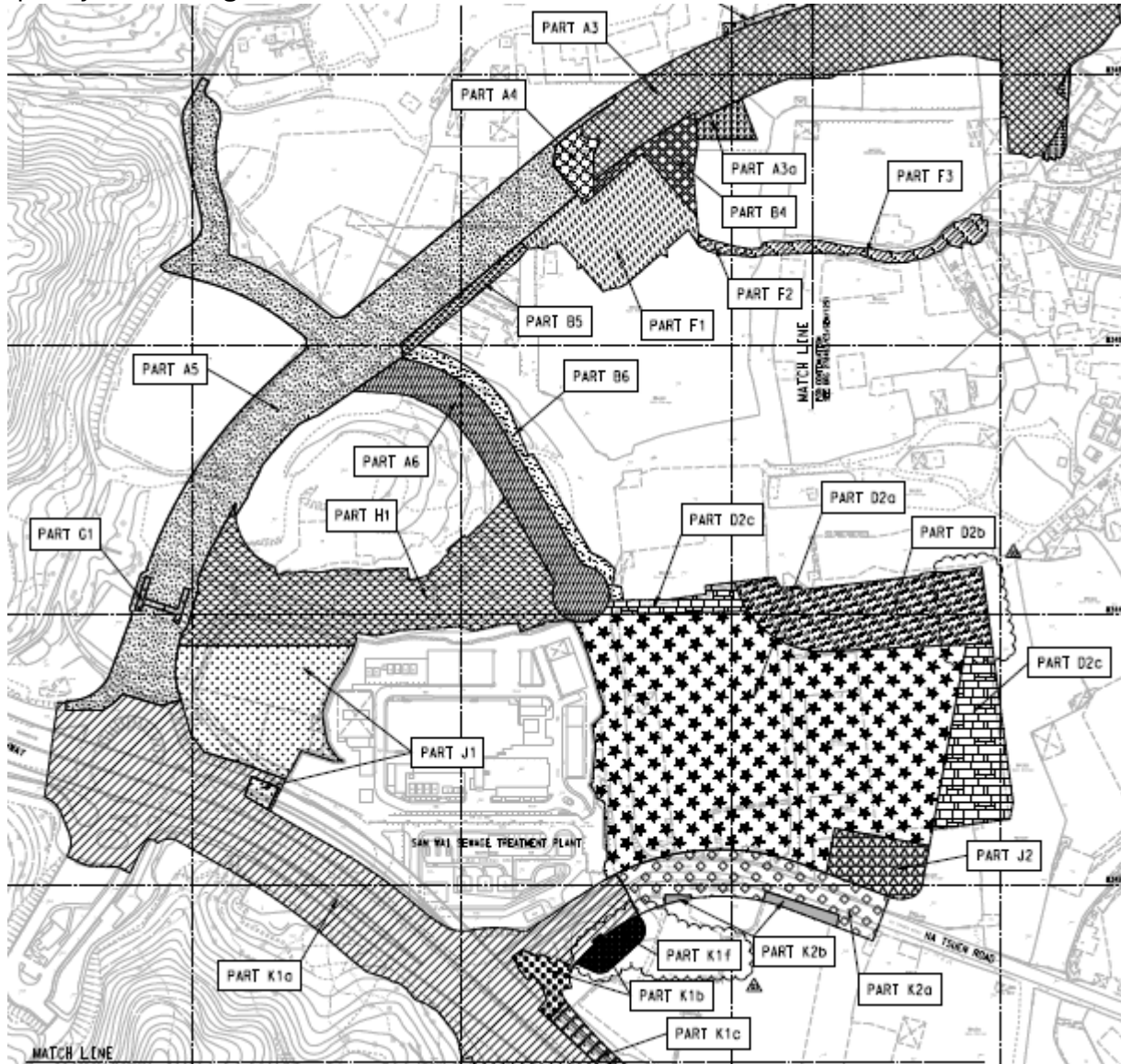
Dear Ming,

I am writing this email to seek agreement from EPD for the suspension of air quality monitoring at AM3 station.

According to EM&A manual, the location of AM3 is representing Planned Port Back-up (PBU), Storage and Workshop (SWU) (i.e. see attached Figure 2.1 of the EM&A Manual) but this area with the proposed land use of PBU and SWU is currently blocked for construction works under a separated

CEDD's development contract as reported by our monitoring technician on 1 Nov 2024 (i.e. refer to AM3.pdf).

Based on the CEDD works contract plan provided by DSD (i.e. refer to the below plan), most of the land parcels, including the area where AM3 is located, areas adjacent to the existing San Wai Sewage Treatment Plant and HSK Effluent Polishing Plant Phase 1, will become active construction areas in near future, and hence, these land parcels are not appropriate to be chosen as an alternative air quality monitoring stations based on the criteria listed in the EM&A Manual Section 2.2.4.3.



In view of the above, we (as ET) have sought and obtained approval from DSD and IEC on 4 Nov 2024 to suspend the air quality monitoring at AM3 until the construction of the Planned Port Bak-up, Storage and Workshop at AM3 is completed (i.e. refer to the attached emails) in accordance with EM&A Manual Section 2.2.4.2 and we would like to seek agreement from EPD on this monitoring arrangement.

Since the upcoming monitoring event is on 7 Nov 2024, it would be grateful if we can receive your reply tomorrow.

Shall you have any question, please don't hesitate to contact me.

Thanks and regards,



**Squall Lam**  
Principal Consultant, Environment

T+ 852 2579-8841

NOTICE: This communication and any attachments ("this message") may contain information which is privileged, confidential, proprietary or otherwise subject to restricted disclosure under applicable law. This message is for the sole use of the intended recipient(s). Any unauthorized use, disclosure, viewing, copying, alteration, dissemination or distribution of, or reliance on, this message is strictly prohibited. If you have received this message in error, or you are not an authorized or intended recipient, please notify the sender immediately by replying to this message, delete this message and all copies from your e-mail system and destroy any printed copies.

-LAEmHhH-zdJzBITWfa4Hqs7pbKI [attachment "AM3.pdf" deleted by Zhongming HE/EPD/HKSARG]

----- Message from KY LAU <kylau02@dsd.gov.hk> on Mon, 4 Nov 2024 08:36:12 +0000 -----

**To:** Johnathan Wong <johnathan.wong@erm.com>, "Yu, Derek Siu-Hong" <Derek.Yu@wsp.com>

**cc:** "Lo, Arthur Hong-Nam" <Arthur.Lo@wsp.com>, "kh.chan@aecom-tms.com" <kh.chan@aecom-tms.com>, "Vanessa" <Vanessa.Ao@aecom.com>, "Li, Vanessa Tsz-Shun" <Vanessa.Li@wsp.com>, "Chan, Wai" <Wai.Chan@wsp.com>

**Subject:** Re: [Internet]RE: [Internet]RE: Hung Sui Kiu Effluent Polishing Plant Phase 1 - Alternative Location of

Dear All,

I have no comment in principle on ET's proposal on the suspension of the air quality monitoring at AM3 until the construction of the Planned Port Back-up, Storage and Workshop at AM3 is completed.

Please submit the proposal to EPD for seeking their agreement.

Thanks.

Regards,  
Gabriel Lau  
E/6, HATS Division, DSD  
Tel. 2159 3410



From: Johnathan Wong <johnathan.wong@erm.com>  
To: "Yu, Derek Siu-Hong" <Derek.Yu@wsp.com>, Mandy To <Mandy.To@erm.com>  
Cc: "kh.chan@aecom-tms.com" <kh.chan@aecom-tms.com>, "Lam, Squall Ka-Wai" <Squall.Lam@wsp.com>,

"tom.chan@aecom-tms.com" <tom.chan@aecom-tms.com>, "Ao, Vanessa" <Vanessa.Ao@aecom.com>, "Li, Vanessa Tsz-Shun" <Vanessa.Li@wsp.com>, "Chan, William" <William.Chan1@aecom.com>, "WT.Law" <wt.law@aecom-tms.com>, "Zhang, Yanning" <Yanning.Zhang@aecom.com>, KY LAU <kylau02@dtd.gov.hk>, "Lo, Arthur Hong-Nam" <Arthur.Lo@wsp.com>  
Date: 04/11/2024 16:26  
Subject: [Internet]RE: [Internet]RE: Hung Sui Kiu Effluent Polishing Plant Phase 1 - Alternative Location of AM3  
Serial No.:

=====  
This email was delivered via the Internet, which may not be trustworthy as it  
You are advised not to click the URLs or open the attachment unless you know i

This email has been verified against its claimed domain and passed. The identi  
email domain may be true, but it doesn't mean it is from the claimed sender an  
=====

Dear Derek,

Understand that no land parcels in the vicinity are appropriate to replace AM3 based on the criteria listed in the EM&A Manual Section 2.2.4.3, we have no comment on the suspension of the air quality monitoring at AM3 until the construction of the Planned Port Back-up, Storage and Workshop at AM3 is completed. Thank you.

Best regards,



Sustainability is our business

**Johnathan Wong**  
Consulting Associate

Hong Kong  
+852 22713025

[erm.com](http://erm.com)

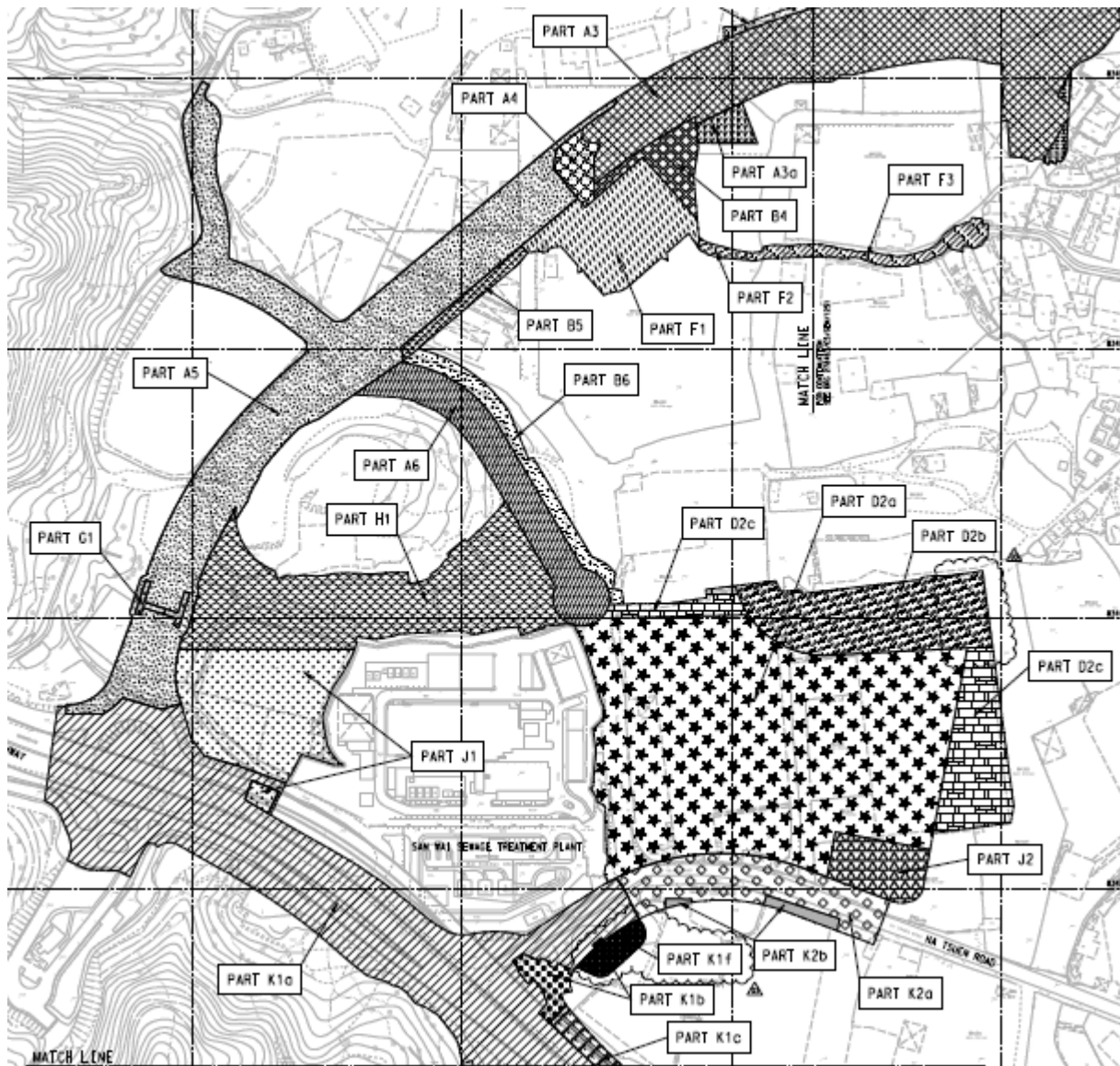
**From:** Yu, Derek Siu-Hong <Derek.Yu@wsp.com>  
**Sent:** Monday, November 4, 2024 3:46 PM  
**To:** Johnathan Wong <johnathan.wong@erm.com>; Mandy To <mandy.to@erm.com>  
**Cc:** kh.chan@aecom-tms.com; Lam, Squall Ka-Wai <Squall.Lam@wsp.com>; tom.chan@aecom-tms.com; 'Ao, Vanessa' <Vanessa.Ao@aecom.com>; Li, Vanessa Tsz-Shun <Vanessa.Li@wsp.com>; 'Chan, William' <William.Chan1@aecom.com>; 'WT.Law' <wt.law@aecom-tms.com>; 'Zhang, Yanning' <Yanning.Zhang@aecom.com>; KY LAU <kylau02@dtd.gov.hk>; Lo, Arthur Hong-Nam <Arthur.Lo@wsp.com>  
**Subject:** RE: [Internet]RE: Hung Sui Kiu Effluent Polishing Plant Phase 1 - Alternative Location of AM3

EXTERNAL MESSAGE

Dear IEC,

According to EM&A manual, the location of AM3 is representing Planned Port Back-up (PBU), Storage and Workshop (SWU) (i.e. see attached Figure 2.1 of the EM&A Manual) but this area with the proposed land use of PBU and SWU is currently blocked for construction works under a separated

CEDD's development contract. Based on the CEDD works contract plan provided by DSD (i.e. refer to the below plan), most of the land parcels, including the area where AM3 is located, areas adjacent to the existing San Wai Sewage Treatment Plant and HSK Effluent Polishing Plant Phase 1, will become active construction areas in near future, and hence, these land parcels are not appropriate to be chosen as an alternative air quality monitoring stations based on the criteria listed in the EM&A Manual Section 2.2.4.3.



In view of the above, we (as ET) would like to suspend the air quality monitoring at AM3 until the construction of the Planned Port Bak-up, Storage and Workshop at AM3 is completed.

Regards,  
Derek Yu  
Consultant, Environment



T+ 852 2579 8702

**From:** KY LAU <[kylau02@dsd.gov.hk](mailto:kylau02@dsd.gov.hk)>  
**Sent:** Monday, November 4, 2024 12:24 PM  
**To:** Johnathan Wong <[johnathan.wong@erm.com](mailto:johnathan.wong@erm.com)>; Lo, Arthur Hong-Nam <[Arthur.Lo@wsp.com](mailto:Arthur.Lo@wsp.com)>; Yu, Derek Siu-Hong <[Derek.Yu@wsp.com](mailto:Derek.Yu@wsp.com)>  
**Cc:** [kh.chan@aecom-tms.com](mailto:kh.chan@aecom-tms.com); [mandy.to@erm.com](mailto:mandy.to@erm.com); Lam, Squall Ka-Wai <[Squall.Lam@wsp.com](mailto:Squall.Lam@wsp.com)>; [tom.chan@aecom-tms.com](mailto:tom.chan@aecom-tms.com); 'Ao, Vanessa' <[Vanessa.Ao@aecom.com](mailto:Vanessa.Ao@aecom.com)>; Li, Vanessa Tsz-Shun

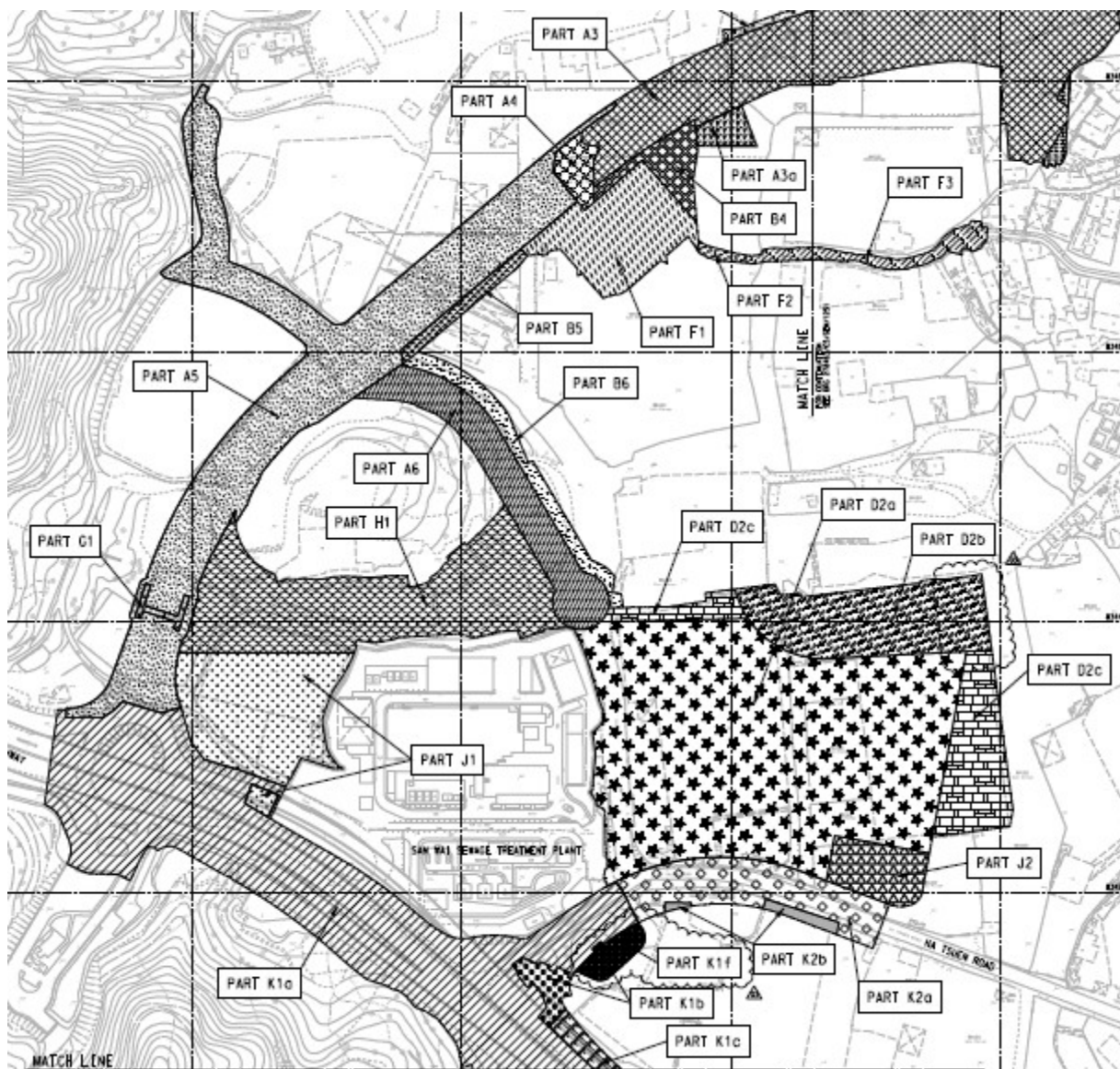


<Vanessa.Li@wsp.com>; 'Chan, William' <William.Chan1@aecom.com>; 'WT.Law' <wt.law@aecom-tms.com>;  
'Zhang, Yanning' <Yanning.Zhang@aecom.com>

**Subject:** Re: [Internet]RE: Hung Sui Kiu Effluent Polishing Plant Phase 1 - Alternative Location of AM3

Dear All,

For choosing alternative air monitoring location, please take note that most of the land parcels surrounding existing San Wai STW and proposed site area of HSKEPP will become construction sites under CEDD's works contract no. 5 (see attached plan).



Regards,  
Gabriel Lau  
E/6, HATS Division, DSD  
Tel. 2159 3410



From: Johnathan Wong <[johnathan.wong@erm.com](mailto:johnathan.wong@erm.com)>  
To: "Yu, Derek Siu-Hong" <[Derek.Yu@wsp.com](mailto:Derek.Yu@wsp.com)>, "kylau02@dsg.gov.hk" <[kylau02@dsg.gov.hk](mailto:kylau02@dsg.gov.hk)>, Mandy To <[Mandy.To@erm.com](mailto:Mandy.To@erm.com)>  
Cc: "kh.chan@aecom-tms.com" <[kh.chan@aecom-tms.com](mailto:kh.chan@aecom-tms.com)>, 'WT.Law' <[wt.law@aecom-tms.com](mailto:wt.law@aecom-tms.com)>, "Zhang, Yanning" <[Yanning.Zhang@aecom.com](mailto:Yanning.Zhang@aecom.com)>, "Chan, William" <[William.Chan1@aecom.com](mailto:William.Chan1@aecom.com)>, "Ao, Vanessa" <[Vanessa.Ao@aecom.com](mailto:Vanessa.Ao@aecom.com)>, "Lam, Squall Ka-Wai" <[Squall.Lam@wsp.com](mailto:Squall.Lam@wsp.com)>, "Li, Vanessa Tsz-Shun" <[Vanessa.Li@wsp.com](mailto:Vanessa.Li@wsp.com)>, "Lo, Arthur Hong-Nam" <[Arthur.Lo@wsp.com](mailto:Arthur.Lo@wsp.com)>, "tom.chan@aecom-tms.com" <[tom.chan@aecom-tms.com](mailto:tom.chan@aecom-tms.com)>  
Date: 04/11/2024 11:34  
Subject: [Internet]RE: Hung Sui Kiu Effluent Polishing Plant Phase 1 - Alternative Location of AM3  
Serial No.:

---

=====  
This email was delivered via the Internet, which may not be trustworthy as it claimed to be. You are advised not to click the URLs or open the attachment unless you know it is safe.

This email has been verified against its claimed domain and passed. The identity of the sender email domain may be true, but it doesn't mean it is from the claimed sender and the content is  
=====

Dear Derek,

According to EM&A manual, the location of AM3 is representing Planned Port Back-up (PBU), Storage and Workshop (SWU).

However, according to figure 2.1 in EM&A manual, the proposed location of alternative monitoring location is at RTS, which does not representing PBU and SWU.

Please review other locations for alternative monitoring locations at the boundary of PBU and SWU which is accessible.

Thank you.

Best regards,



Sustainability is our business

**Johnathan Wong**  
Consulting Associate

---

---

---

Hong Kong  
+852 22713025

[erm.com](http://erm.com)

**From:** Yu, Derek Siu-Hong <[Derek.Yu@wsp.com](mailto:Derek.Yu@wsp.com)>  
**Sent:** Monday, November 4, 2024 10:47 AM  
**To:** [kylau02@dtd.gov.hk](mailto:kylau02@dtd.gov.hk); Mandy To <[mandy.to@erm.com](mailto:mandy.to@erm.com)>; Johnathan Wong <[johnathan.wong@erm.com](mailto:johnathan.wong@erm.com)>  
**Cc:** [kh.chan@aecom-tms.com](mailto:kh.chan@aecom-tms.com); 'WT.Law' <[wt.law@aecom-tms.com](mailto:wt.law@aecom-tms.com)>; 'Zhang, Yanning' <[Yanning.Zhang@aecom.com](mailto:Yanning.Zhang@aecom.com)>; 'Chan, William' <[William.Chan1@aecom.com](mailto:William.Chan1@aecom.com)>; 'Ao, Vanessa' <[Vanessa.Ao@aecom.com](mailto:Vanessa.Ao@aecom.com)>; Lam, Squall Ka-Wai <[Squall.Lam@wsp.com](mailto:Squall.Lam@wsp.com)>; Li, Vanessa Tsz-Shun <[Vanessa.Li@wsp.com](mailto:Vanessa.Li@wsp.com)>; Lo, Arthur Hong-Nam <[Arthur.Lo@wsp.com](mailto:Arthur.Lo@wsp.com)>; [tom.chan@aecom-tms.com](mailto:tom.chan@aecom-tms.com)  
**Subject:** Hung Sui Kiu Effluent Polishing Plant Phase 1 - Alternative Location of AM3

**EXTERNAL MESSAGE**

Dear Gabriel and IEC,

As reported by our technician on 1 Nov 2024, the access road of AM3 was blocked and the area around AM3 will likely become an active construction area in near future. Therefore, AM3 will not be a representative Air Quality Monitoring Station for this Project anymore.

According to the EM&A manual, selection of alternative monitoring locations shall follow the criteria below:

- I. at the site boundary or such locations close to the major dust emission source;
- II. close to the air sensitive receivers as defined in the EIAO-TM;
- III. proper position/sitting and orientation of the monitoring equipment; and,
- IV. take into account the prevailing meteorological conditions.

Based on the above, we (as ET) are proposing an alternative AQ monitoring station (i.e. AM3a) which is located at the western corner of the existing DSD effluent treatment plant (i.e. refer to P.3 of the attachment), near AM3 and the Project site.

Since the next AQ monitoring event is on 7 Nov 2024, grateful if you could provide your comment, if any, by today.

Should you have no comment on the arrangement, we will inform EPD accordingly before 7 Nov 2024. Thank you.

Regards,  
Derek Yu



---

NOTICE: This communication and any attachments ("this message") may contain information which is privileged, confidential, proprietary or otherwise subject to restricted disclosure under applicable law. This message is for the sole use of the intended recipient(s). Any unauthorized use, disclosure, viewing, copying, alteration, dissemination or distribution of, or reliance on, this message is strictly prohibited. If you have received this message in error, or you are not an authorized or intended recipient, please notify the sender immediately by replying to this message, delete this message and all copies from your e-mail system and destroy any printed copies.

-LAEmHhHzdJzBITWfa4Hgs7pbKI

---

This e-mail and any attachments may contain proprietary, confidential and/or privileged information. No confidentiality or privilege is waived or lost by any transmission errors. This communication is intended solely for the intended recipient, and if you are not the intended recipient, please notify the sender immediately, delete it from your system and do not copy, distribute, disclose, or otherwise act upon any part of this email communication or its attachments. To find out how the ERM Group manages personal data please review our [Privacy Policy](#)

=====  
This message has been analyzed by Deep Discovery Email Inspector.

---

This e-mail and any attachments may contain proprietary, confidential and/or privileged information. No confidentiality or privilege is waived or lost by any transmission errors. This communication is intended solely for the intended recipient, and if you are not the intended recipient, please notify the sender immediately, delete it from your system and do not copy, distribute, disclose, or otherwise act upon any part of this email communication or its attachments. To find out how the ERM Group manages personal data please review our [Privacy Policy](#)

=====  
This message has been analyzed by Deep Discovery Email Inspector.

[attachment "Figure 2.1.pdf" deleted by zhongqing.HSE@ERM.COM]