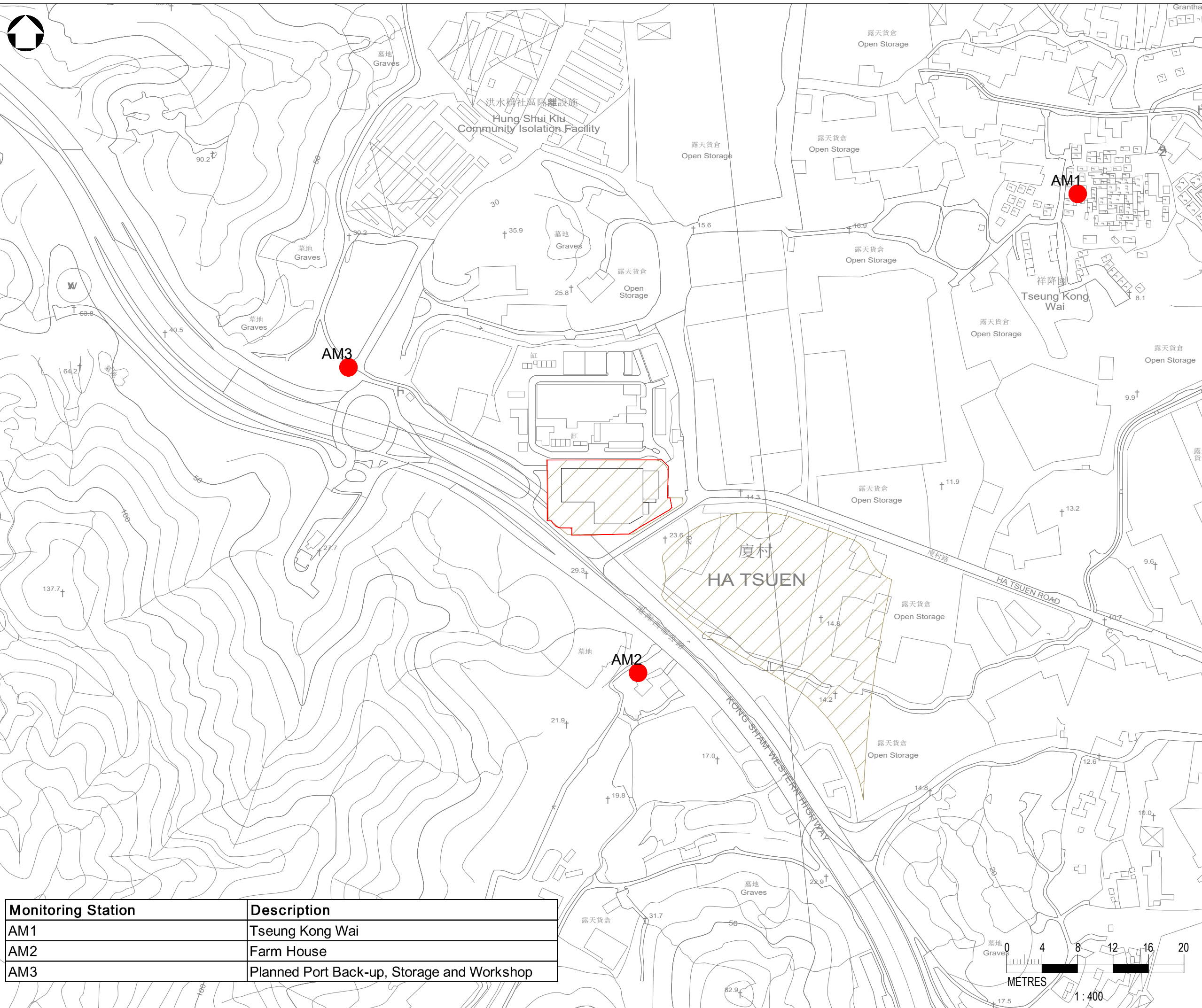
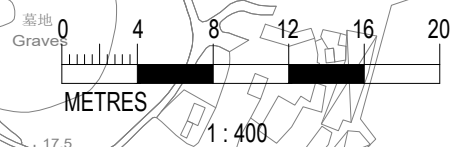




- LEGEND:**
- SITE BOUNDARY
  - PROPOSED HUNG SHUI KIU (HSK) EFFLUENT POLISHING PLANT
  - CONSTRUCTION DUST MONITORING STATION



Monitoring Station	Description
AM1	Tseung Kong Wai
AM2	Farm House
AM3	Planned Port Back-up, Storage and Workshop



Rev	Description	By	Date
<b>Project title</b> CONTRACT NO. HATS 07/2023 ENVIRONMENTAL TEAM FOR HUNG SHUI KIU EFFLUENT POLISHING PLANT PHASE 1			
<b>Drawing title</b> LOCATIONS OF CONSTRUCTION DUST MONITORING STATIONS			
Drawing no. <b>FIGURE 3.1</b>		Rev. <b>0</b>	
Drawn YT	Date JUL2024	Checked VL	Approved AL
Scale 1:400@A3		Status -	
© COPYRIGHT RESERVED			

Date : 2024/08/30  
 Filename : \\hkwn20\dat16\sde\ENV\7. Projects\Project\_H321\_ENV\2535851-2535900\2535852A - DSD HSK Polishing Plant ET106 Drawings\Fig\_HSK\_20240724.dwg